

**All items should be clearly labelled with the pupil's name.**

Long hair must be tied back at all times with a red or navy hair band. No nail varnish. No jewellery except small stud earrings, which must be removed for swimming, PE, games and clubs.

House colours: **HOBSON (green)** **MALCOLMSON (blue)** **OSMOND (yellow)** **SEARLE (red)**

## Green Shoots & Kindergarten

Red sweatshirt with school logo*	Wellies ( <i>any colour</i> )
Navy jersey/cotton leggings/jogging bottoms	Waterproof jacket
Grey skirt* and tights ( <i>KG only, if preferred</i> )	Winter coat
White short-sleeve polo shirt	Kukri House T-shirt ( <i>KG only</i> )
Coat, scarf, gloves and hat ( <i>any colour</i> ) as weather requires	Navy shorts
Closed-toe shoes ( <i>any colour</i> )	White socks ( <i>no tights with summer dress</i> )
RSM logo navy rucksack* ( <i>KG only, two sizes available</i> )	RSM logo red sun cap* ( <i>legionnaire style preferred</i> )
Red striped summer dress* ( <i>summer – optional</i> )	Waterproof trousers
Red/white cycling shorts ( <i>optional to be worn under summer dress</i> )	RSM drawstring bag in House colour*

## Reception

Red sweatshirt with school logo*	White socks ( <i>no tights with summer dress</i> )
Grey pleated skirt/grey trousers* ( <i>winter</i> )	RSM logo winter beanie hat* ( <i>as weather requires</i> )
White short-sleeve polo shirt	Plain navy coat or school cagoule with zip-in fleece*
Grey socks/tights ( <i>winter</i> )	Art overall*
Black leather/patent shoes ( <i>Velcro fastening</i> )	RSM logo navy rucksack ( <i>larger size</i> )*
Navy, black or red scarf and gloves	Navy waterproof trousers
Red striped summer dress* ( <i>summer – optional</i> ) /grey shorts ( <i>summer</i> )	Wellies
Red/white cycling shorts ( <i>optional to be worn under summer dress</i> )	RSM drawstring bag in House colour*

## Years 1–6

RSM school blazer*	RSM logo navy school rucksack ( <i>larger size</i> )*
House tie*	Navy, black or red scarf and gloves
Red v-neck cardigan/sweater*	RSM logo winter beanie hat* ( <i>as weather requires</i> )
Grey pleated skirt/grey trousers* ( <i>winter</i> )	Plain navy coat or school cagoule with zip-in fleece*
White shirt ( <i>long or short sleeve</i> )	RSM drawstring bag in House colour*
Grey socks/tights ( <i>winter</i> )	
Black leather/patent shoes ( <i>no embellishments</i> )	<b>Years 1 &amp; 2 only</b>
Red striped summer dress* ( <i>summer – optional</i> ) /grey shorts ( <i>summer</i> )	Art overall*
White socks ( <i>no tights</i> ) with summer dress ( <i>summer</i> )	Navy waterproof coat, trousers and wellies of any colour ( <i>Forest School</i> )
Red/white cycling shorts ( <i>optional to be worn under summer dress</i> )	

**All items should be clearly labelled with the pupil's name.**

Long hair must be tied back at all times with a red or navy hair band. No nail varnish. No jewellery except small stud earrings, which must be removed for swimming, PE, games and clubs.

House colours: **HOBSON (green)** **MALCOLMSON (blue)** **OSMOND (yellow)** **SEARLE (red)**

## Reception

RSM drawstring bag in House colour\*  
Navy shorts\*  
Kukri RSM House sports top\*  
Navy jersey tracksuit trousers  
RSM logo navy school hoodie\*  
Trainers with Velcro fastening (*for outdoor use*)  
RSM logo red school sun cap\*

### Swimming Kit

Navy swimming costume/trunks (*not shorts*)\*  
Towel  
Drawstring (House colour) swimming bag\*  
Navy swimming hat

## Years 1 & 2

RSM drawstring bag in House colour\*  
Navy shorts\*  
Kukri RSM House sports top\*  
RSM school hoodie\*  
Navy jersey tracksuit trousers  
Trainers with good grip (*for outdoor use*)  
Trainers with non-marking soles (*for indoor use*)  
White ankle socks  
Trainer bags for outdoor trainers (*optional for Year 1*)

Football boots (*Year 2 only and optional*)  
Shin pads (*Year 2*)  
RSM logo red school sun cap\*

### Swimming Kit

Navy swimming costume/trunks\*  
Towel  
Drawstring (House colour) swimming bag\*  
Navy swimming hat

## Years 3–6

### Hockey/Rugby/Netball/Football/Cricket Kit

Kukri RSM tracksuit top\*  
Kukri RSM tracksuit bottoms\*  
Kukri RSM games top\*  
Kukri RSM reversible rugby top\*  
Kukri RSM navy skort\*  
Kukri RSM navy PE shorts\* (*used for games and PE*)  
Kukri RSM navy rugby shorts\*  
Kukri RSM white cricket top\*  
Kukri RSM white cricket trousers\* (*hardball only*)  
Trainers with good grip  
RSM logo trainer bag for outdoor trainers\*  
Trainers with non-marking soles (*for indoor use*)  
RSM logo red school sun cap\*  
Kukri blue and white striped playing socks\*  
(*hockey/football/rugby*)  
Football boots  
Mouthguard (*hockey/rugby*)  
Shin pads (*hockey/football*)  
White ankle socks (*netball/cricket*)

### Optional

Rugby boots  
Astro boots  
Kukri RSM blast fleece\*  
Kukri RSM navy rain jacket\*  
Kukri RSM white sleeveless cricket jersey\*

### PE Kit

Kukri RSM House sports top\*  
White ankle socks  
Kukri RSM navy PE shorts\* (*used for games and PE*)  
Kukri RSM base layer (*top and bottom*)\*

### Swimming Kit (on rotation)

Navy swimming costume/trunks\*  
Towel  
Drawstring (House colour) swimming bag\*  
RSM logo navy swimming hat\*





# ✦ KUKRI



RSM Playing Socks



RSM Games Top



RSM Rugby Shorts



RSM Navy PE Shorts



RSM Tracksuit Top



RSM Tracksuit Bottoms



RSM Navy Skort



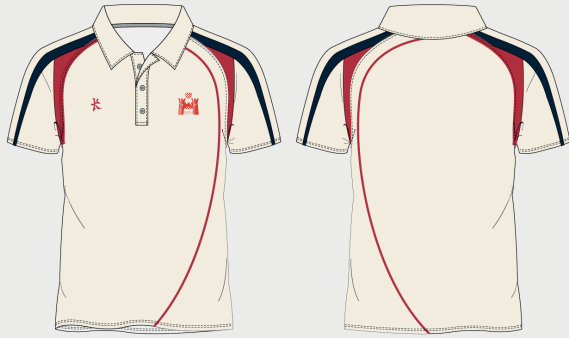
RSM Reversible Rugby Top



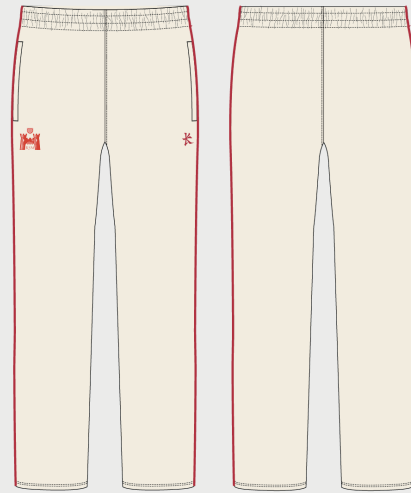
RSM Blast Fleece – OPTIONAL



RSM Navy Rain Jacket – OPTIONAL



RSM White Cricket Top



RSM White Cricket Trousers  
(Hardball Cricket)



RSM White Sleeveless Cricket Jersey – OPTIONAL



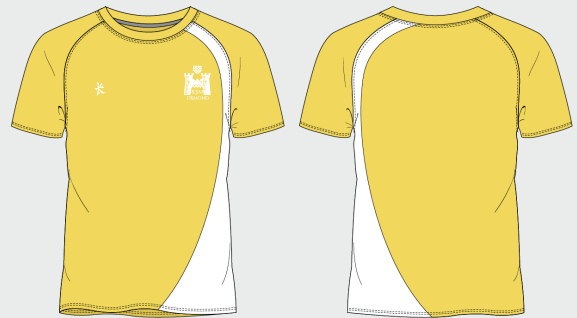
RSM House Sports Top Searle



RSM House Sports Top Malcolmson



RSM House Sports Top Hobson



RSM House Sports Top Osmond